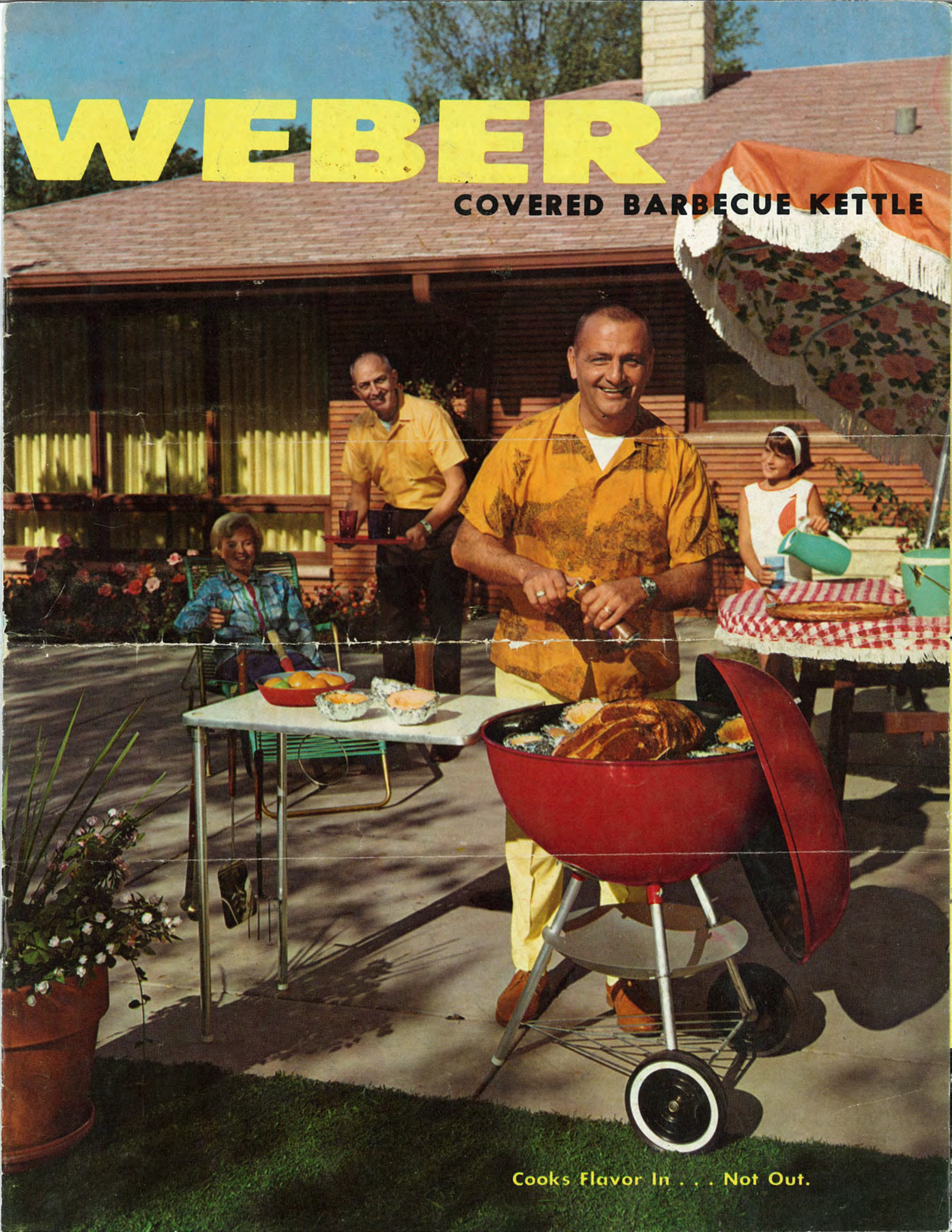


# WEBER

## COVERED BARBECUE KETTLE

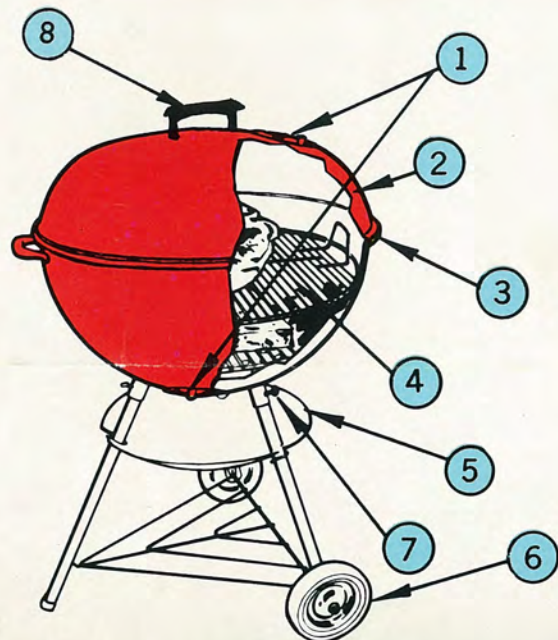


Cooks Flavor In . . . Not Out.



# WEBER KETTLES

*these outstanding features make*  
**WEBER** *the choice of barbecue experts*



## Why Foods Cook Better . . . IN A WEBER!!

WEBER kettles cook with reflected heat to combine the economy of an oven with the zest of a barbecue.

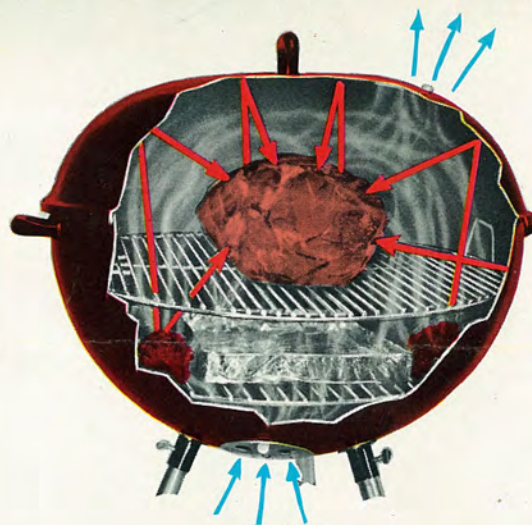
With the exclusive WEBER cover in place, foods cook in their own juices—stay flavorful juicy and tender even when "well done."

A unique damper system controls heat to suit you—brings out the matchless flavor of the finest cuts . . . even less expensive meats are transformed into gourmet delights.

## WEBER PRINCIPLE

Uses two grills, the upper for food, the lower for charcoal. Air circulates all through the charcoal to distribute heat evenly and seal in flavor and juices.

- 1 Easy-to-use dampers regulate heat—have positive stops and provide full-range cooking control.
- 2 "Long-last" porcelain finish inside and out—a durable surface for lasting beauty.
- 3 The Original WEBER Cover ends flare-ups—holds in heat, eliminates scorching and burning and puts out coals.
- 4 Scientifically spaced dual grills—one for charcoal, one for food—need no adjustment, and have no moving parts to wear.
- 5 Weather-proof Aluminum ash-catcher, dampers, and legs—will not rust.
- 6 Rugged, whitewall, rubber-tired wheels—oversize for easy moving.
- 7 Easy to assemble—3 thumb screws, 2 hubs.
- 8 New Walnut handles on Covers 300 - 700 - and 800 series.



## WEBER ECONOMY

WEBER kettles are built to outlast ordinary barbecues and what's more, WEBER gives you real economy too.

Use fewer briquettes to begin with—when through, close all dampers and coals go out almost instantly. Use the same coals up to 5 times—practically pays for itself in charcoal savings alone!



# WEBER Starts Where Others Leave Off.



## THE TEXAN

Jet Black lifetime porcelain finish. Aluminum ash catcher, legs, and fixtures. Utility shelf. Whitewall rubber-tired wheels. 22 $\frac{3}{4}$ " grill diameter, 29" height. Shipped in single carton, 5.9 cu. ft., 38 lbs.

**BK-710** .....\$49.95



## THE STATESMAN

Hunters' Pink (red) lifetime porcelain finish. Aluminum ash catcher, legs, and fixtures. Utility shelf. Whitewall, rubber-tired wheels. 22 $\frac{3}{4}$ " grill diameter, 29" height. Shipped in single carton, 5.9 cu. ft., 38 lbs.

**BK-730** .....\$54.95



## THE IMPERIAL

Glen-blue lifetime porcelain finish. Aluminum ash catcher, legs, and fixtures. Utility shelf. Whitewall, rubber-tired wheels. 22 $\frac{3}{4}$ " grill diameter, 29" height. Shipped in single carton, 5.9 cu. ft., 38 lbs.

**BK-750** .....\$54.95



## THE ESTATE

Chestnut-Copperton lifetime porcelain finish. Aluminum ash catcher, legs, and fixtures. Utility shelf. Whitewall, rubber-tired wheels. 22 $\frac{3}{4}$ " grill diameter, 29" height. Shipped in single carton, 5.9 cu. ft., 38 lbs.

**BK-770** .....\$54.95





# Cookout Fun for a Lifetime



## THE ARISTOCRAT

Hunter's Pink (red) lifetime porcelain finish. Aluminum ash catcher, legs and fixtures. Utility shelf and whitewall, rubber-tired wheels. 26" grill diameter, 32" height. Shipped in single carton, 8.5 cu. ft., 53 lbs.

LBK-830 .....\$71.95



## THE FLEETWOOD

Jet Black lifetime porcelain finish. Aluminum ash catcher, legs and fixtures. Utility shelf and whitewall, rubber-tired wheels. 26" grill diameter, 32" height. Shipped in single carton, 8.5 cu. ft., 53 lbs.

LBK-810 .....\$66.95



## THE WESTERNER

Authentic western steer head design on sides. Chestnut-Coppertone lifetime porcelain finish. Aluminum ash catcher, legs and fixtures. Utility shelf and whitewall, rubber-tired wheels. 26" grill diameter, 32" height. Shipped in single carton, 8.5 cu. ft., 53 lbs.

LBK-870 .....\$74.95



## THE RANCH

For the serious barbecuer, lodges or clubs. Jet Black lifetime porcelain finish. Utility shelf. Hinged openings in cooking grill make it easy to replenish charcoal while cooking. Whitewall, rubber-tired wheels. 36½" grill diameter, 27" height. Shipped in single carton, 15 cu. ft., 125 lbs.

RB-600 .....\$175.95







#### THE TRAVELER

Jet Black lifetime porcelain finish. A campers delight with detachable aluminum legs for easy storage. 18" grill diameter, 28" height. Shipped in single carton, 3.5 cu. ft., 21 lbs.

**JBK-300 .....\$29.95**



#### THE 49'ER

Jet Black lifetime porcelain finish. Aluminum ash catcher, legs, and fixtures. Utility shelf. Whitewall rubber-tired wheels. 18" grill diameter, 28" height. Shipped in single carton, 3.6 cu. ft., 27 lbs.

**JBK-310 .....\$34.95**

#### THE EASTERNER

Hunters' Pink (red) lifetime porcelain finish. Aluminum ash catcher, legs and fixtures. Utility shelf. White-wall, rubber-tired wheels. 18" grill diameter, 28" height. Shipped in single carton, 3.6 cu. ft., 27 lbs.

**JBK-330 .....\$38.95**



#### IMPROVED SMOKEY JOE

Jet Black lifetime porcelain finish. Ideal for picnics. Improved damper control. 13½" grill diameter, 13" height. Individually packed. Shipped 6 to a case, 6.7 cu. ft., 60 lbs.

**SJ-100 .....\$14.95**



#### THE GALLEY-QUE

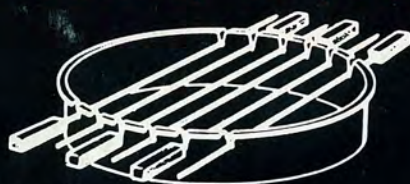
Sea Foam Aqua lifetime porcelain finish. Fitted chromed gimballs keep grill level at all times. Gimbel cleat secures to special boat bracket. Chrome plated safety cup retains all ashes and sparks. Four chrome plated legs. Convenient gimbal carrying handle. Ideal for ship or shore. 13½" grill diameter, 13" height. Shipped in single carton, 3.1 cu. ft., 18 lbs.

**BG-110 .....\$34.95**



## WEBER accessories

Add Versatility to your Barbecue.



#### SKOBB SET

Skewers fit into top of kettle. Covers hood while skewers in cooking position. Jet Black porcelain finish hood. Chrome plated skewers. Heat resistant wood handles.

**JBK models)—4 skewers  
(¾ cu. ft.) .....\$8.95**

**BK models)—6 skewers  
(1 cu. ft.) .....\$9.95**

**LBK models)—6 skewers**



#### WORK TABLE

Laminated highly resistant plastic top. Adjustable chrome legs. Stainless steel edging. Also, towel ring and utensil rack. Easily attaches to kettle. Fits all models except SJ-100 and BG-110. Varied patio colors—no choices, 18"x30".

**WT-18 (Varied colors)—(15 lbs.)—(1 cu. ft.)  
(For JBK or BK models only) .....\$18.95**

#### CORN 'N TATOR GRILL

Deluxe nickel plated cooking ring for use on top of standard cooking grill or use it individually. Will barbecue-cook any combination of 16 ears of corn or spuds. The perfect accessory. Shipped in single carton, 1.1 cu. ft., 3 lbs. Can be used on 700 series grills ONLY.

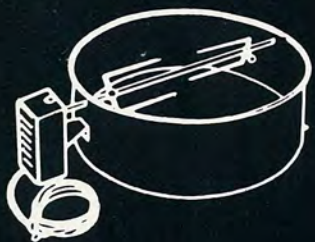
**CT-38 .....\$6.95**

**CT-32 for 800 series ONLY .....\$7.95**





## ADDITIONAL ACCESSORIES



### WEBER BARBECUE SPITS

Jet Black lifetime porcelain finish. Rotisserie hood, shaft, 2 spit forks and electric motor. Converts grill to rotisserie cooking.

RA-21 (for JBK models)—(14 lbs.) (2.2 cu. ft.)	\$28.95
RA-22 (Black)—(for BK models) Spits for 700 models (14 lbs.) (2.1 cu. ft.)	\$34.95
RA-23 (for RB models)—(30 lbs.) (9.0 cu. ft.)	\$45.95
RA-24 (for LBK models)—(19 lbs.) (2.5 cu. ft.)	\$38.95
S-50 Shaft (for JBK models)—(2 lbs.)	\$ 2.00
S-60 Shaft (for BK models)—(2 lbs.)	\$ 2.00
S-65 Shaft (for LBK models)—(3 lbs.)	\$ 2.50
S-70 Shaft (for RB models)—(4 lbs.)	\$ 3.00
SP-75 Spit Forks, 1 pair (1 lb.)	\$ 1.80
M-30 Electric Motor and Coupling (3 lbs.)	\$14.95

### ROTISSERIE HOODS

SH-10 (for JBK models)—(7 lbs.)	\$13.95
SH-11 (Black)—(for BK models)—(9 lbs.)	\$15.95
SH-12 (for RB models)—(25 lbs.)	\$22.95
SH-13 (for LBK models)—(14 lbs.)	\$18.95

### ROAST TONGS

This heavy-duty nickel plated tongs with vinyl covered handles simplifies transferring of food from cooking unit to carving board. Will not pierce or puncture food, thereby eliminating loss of juice and flavor. Shipped 6 in single carton. 2 cu. ft., 12 lbs.

RT-33	\$2.49
-------	--------



### CHARCOAL CADDY

The no-mess way to handle charcoal. Keeps hands clean and charcoal dry. Tilts and dumps charcoal into cover which also serves as scoop. Jet Black bottom and copper color scoop cover. 20 lb. charcoal capacity. 24" height, 10" diameter.

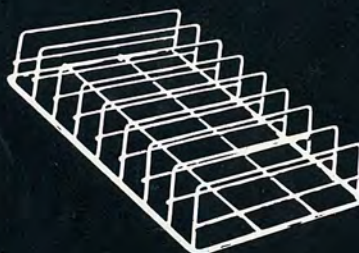
CC-900 (1.7 cu. ft., 15 lbs.)	\$12.95
-------------------------------	---------



### CHARCOAL RAILS

Newest aid to indirect cooking. Rails slip over bottom grill to keep coals along sides of kettle. Can be used on 700 or 800 series grills only. Shipped in single carton. .5 cu. ft., 1 lb.

CR-39	\$2.95
-------	--------



### RIB RACK

Sturdy, nickel plated rack increases rib cooking capacity by 50%. Adapts to any cooking unit or oven. Eliminates double stacking ribs and simplifies basting. Reduces need for constant attention while cooking. Shipped in single carton. 1 cu. ft., 5 lbs. Can be used on 700 or 800 series grills ONLY.

RR-37	\$6.95
-------	--------

### ELEVATED HALF-GRILL

Nickel plated half-grill rests on regular cooking grill and increases cooking area by 50%. Just right for potatoes, corn on the cob, etc. 4 lbs. (1/2 cu. ft.)

G-9 (for BK models only)	\$4.95
--------------------------	--------



### "COOLIE PAN" FOR ORIENTAL DISHES

By popular demand—authentic "Coolie Pan." Complete with imported hand made, iron ladle and shovel. Perfect for Chinese, Japanese and Hawaiian dishes. Recipes included.

CP-14 (for JBK and BK models)—(11 lbs.) (2 cu. ft.)	\$14.95
--	---------

### CORN 'N TATOR GRILL

Nickel plated cooking ring fully utilizes all cooking area. Permits barbecue-cooking corn and spuds to augment other foods for complete barbecue. For use on 300 series only. Shipped in single carton, 1 cu. ft., 2 lbs.

CT-31	\$4.95
-------	--------



### KETTLE COVER

Heavy duty scotch plaid vinyl cover, water-proof-flame resistant. Keeps kettle clean in storage.

BC 43 (for JBK model) wt. 1 lb.	\$2.98
BC 47 (for BK models) wt. 1 1/2 lbs.	\$4.48
BC 48 (for LBK models) wt. 2 lbs.	\$5.98

Shipped in multiples of 6



### COOK BOOK

This exciting book gives specific instructions on covered barbecue cooking. Thoroughly tested recipes take all the guess-work out of barbecuing. Each display shipped complete with 10 catalogs, in single carton. 2 lbs.

CB-50 Display w/10 books	\$5.00
Separate Books, Each	.50

### ROASTSTAND

The perfect cooking aid. Sanitary Aluminum base and prongs. Reduces cooking time 40%, shrinkage by 33 1/3%. Adaptable to all types of cooking, barbecue or oven. Attractive individual carton. Shipped 6 to a master carton, 8 1/2 lbs., 3/4 cu. ft.

RS-90 (Each)	\$4.95
--------------	--------



### NEW IMPROVED FIRE BLOWER

Completely portable, battery operated motor creates draft for building hot fires quickly. Will ready cooking coals in 5 to 10 minutes. Standard 6 volt lantern battery. Shipped 12 to a master carton, 15 lbs. (1.3 cu. ft.)

FB 201 (each less battery)	\$4.95
----------------------------	--------



### COOKING GRILLS

G-1 Smokey Joe—(1 lbs.)	\$ 2.00
G-2 JBK models—(3 1/2 lbs.)	\$ 4.00
G-3 RB models—(20 1/2 lbs.)	\$12.50
G-11 LBK models—(8 lbs.)	\$ 6.50
G-4 BK models—(6 lbs.)	\$ 5.50

### CHARCOAL GRILLS

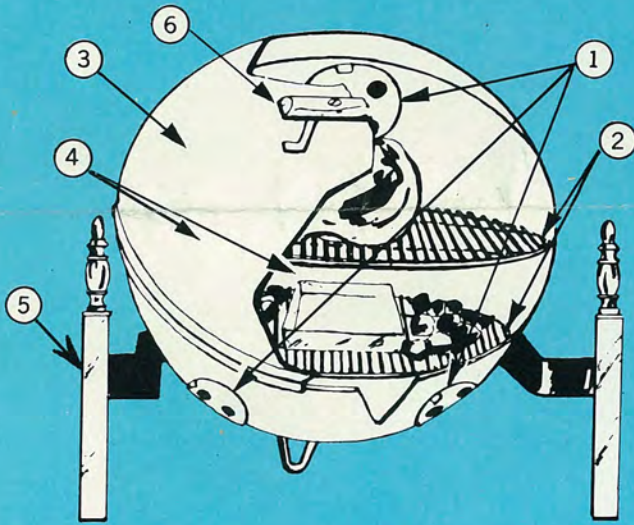
G-5 Smokey Joe—(1 lbs.)	\$1.40
G-6 JBK models—(2 lbs.)	\$2.00
G-7 RB models—(17 lbs.)	\$8.00
G-10 LBK models—(5 lbs.)	\$4.00
G-8 BK models—(3 1/2 lbs.)	\$3.00



*another product for year round leisure living.*

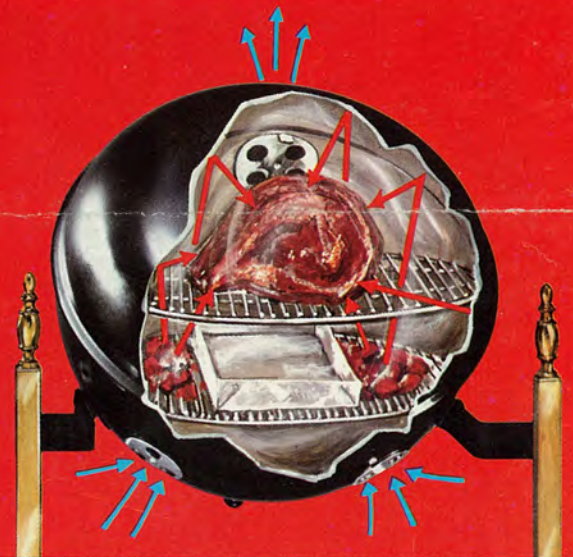
# *The all new* **WEBER**

*Fireplace  
Covered Barbecue  
Kettle.*



## **Features**

1. Dampers regulate heat for full range cooking control.
2. Scientifically spaced dual grills need no adjustment. Cooking grill locks into position.
3. Cover stops flareups, eliminates scorching and burning. Puts out live coals with proper damper regulation.
4. Long lasting porcelain finish inside and out, a durable surface for lasting beauty.
5. Rugged iron stand with satin finish brass plated columns and finials.
6. Decorative walnut handle.



## **Why Foods Cook Better . . . IN A WEBER!!**

"WEBER kettles cook with reflected heat to combine the economy of an oven with the zest of a barbecue.

With the exclusive WEBER cover in place, foods cook in their own juices—stay flavorful juicy and tender even when "well done."

A unique damper system controls heat to suit you—brings out the matchless flavor of the finest cuts . . . even less expensive meats are transformed into gourmet delights.



# The exciting **WEBER** Fireplace Barbecue Kettle

Add versatility and charm to your fireplace with this attractive porcelainized Weber Kettle.

The design and quality of the Weber Kettle will contribute a delightful atmosphere to any gathering of family and friends.

The famous Weber principle of complete damper controlled heat and ease of operation has now been applied to the new exciting and beautiful Fireplace Kettle.

The cover eliminates the necessity of rotating whole meats. The fireplace chimney will carry out smoke and excessive odors and supply the natural draft to assure proper and efficient charcoal action.

Enjoy the zest and flavor of outdoor cooking in the comfort of your home, with the all new Weber Fireplace Covered Barbecue Kettle.



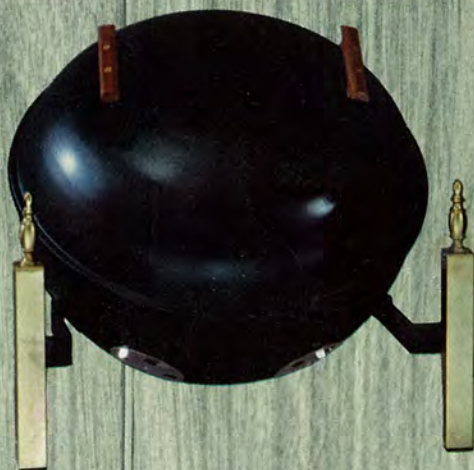
The **WEBER FIREPLACE BARBECUE KETTLE** is available in two sizes with two colors in each size.

**FBK-410** —18" diameter, Jet Black porcelain finish, complete with stand—Overall dimensions H. 20", W. 22", D. 15", wt. 29 lbs. 3.5 cu. ft. **\$39.95**

**FBK-430** —18" diameter, Red porcelain cover, Black porcelain kettle, complete with stand—Overall dimensions H. 20", W. 22", D. 15", wt. 29 lbs. 3.5 cu. ft. **\$41.95**

**FBK-510** —23" diameter, Jet Black porcelain finish, complete with stand—Overall dimensions H. 23", W. 25½", D. 22", wt. 41 lbs. x 5.7 cu. ft. **\$54.95**

**FBK-530** —23" diameter, Red porcelain cover, Black porcelain kettle, complete with stand—Overall dimensions H. 23", W. 25½", D. 22", wt. 41 lbs. x 5.7 cu. ft. **\$56.95**



**WEBER-STEPHEN PRODUCTS CO. • ARLINGTON HEIGHTS, ILLINOIS**

Printed in U.S.A.